

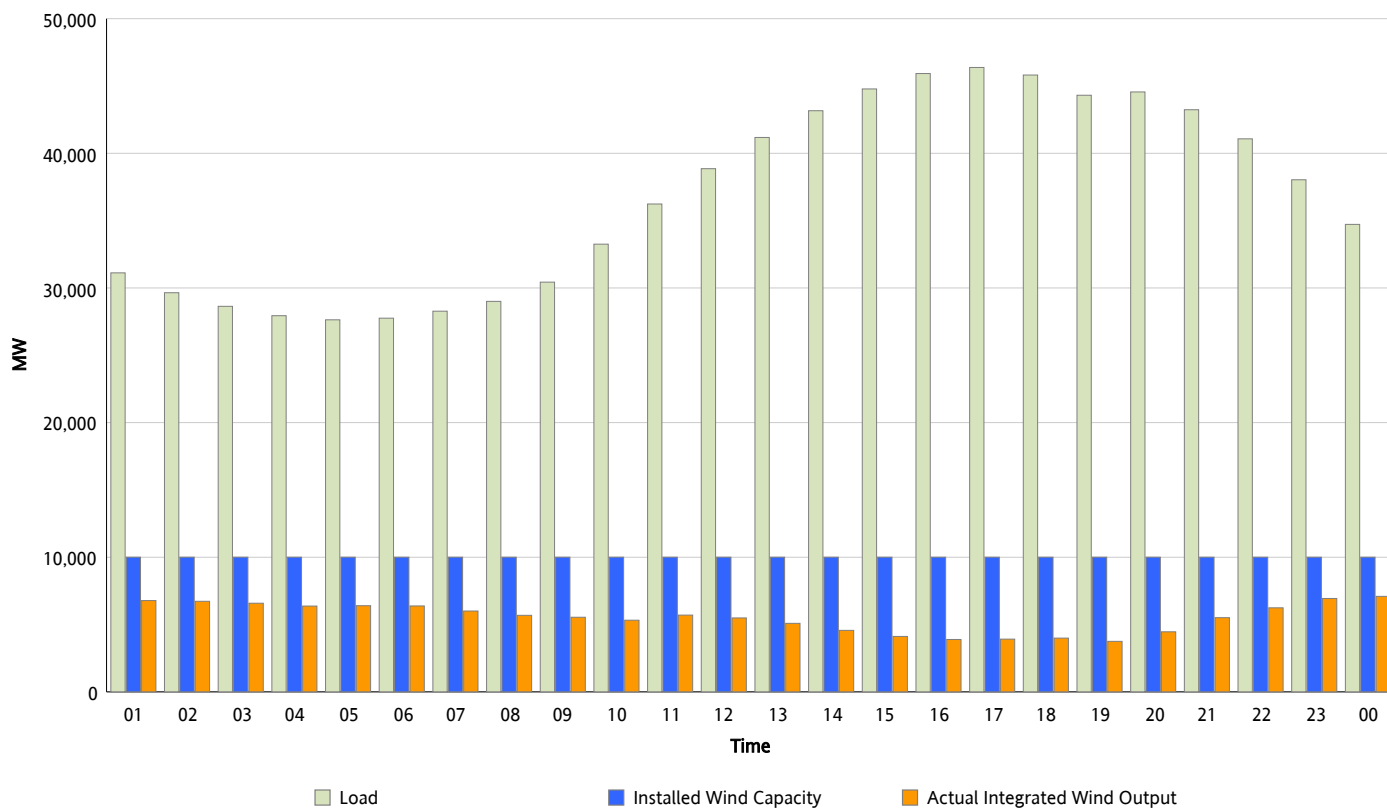


## ERCOT Grid Operations

### Wind Integration Report : 10/21/2012

Peak Load	46,378 MW
Load Peak Hour (HE)	17
Wind Over Peak	3,916 MW
Wind Record 06/19/12	8,368 MW
Max Wind Value*	7,252 MW
Wind Peak Time	23:16
Wind Integration %	20.51 %

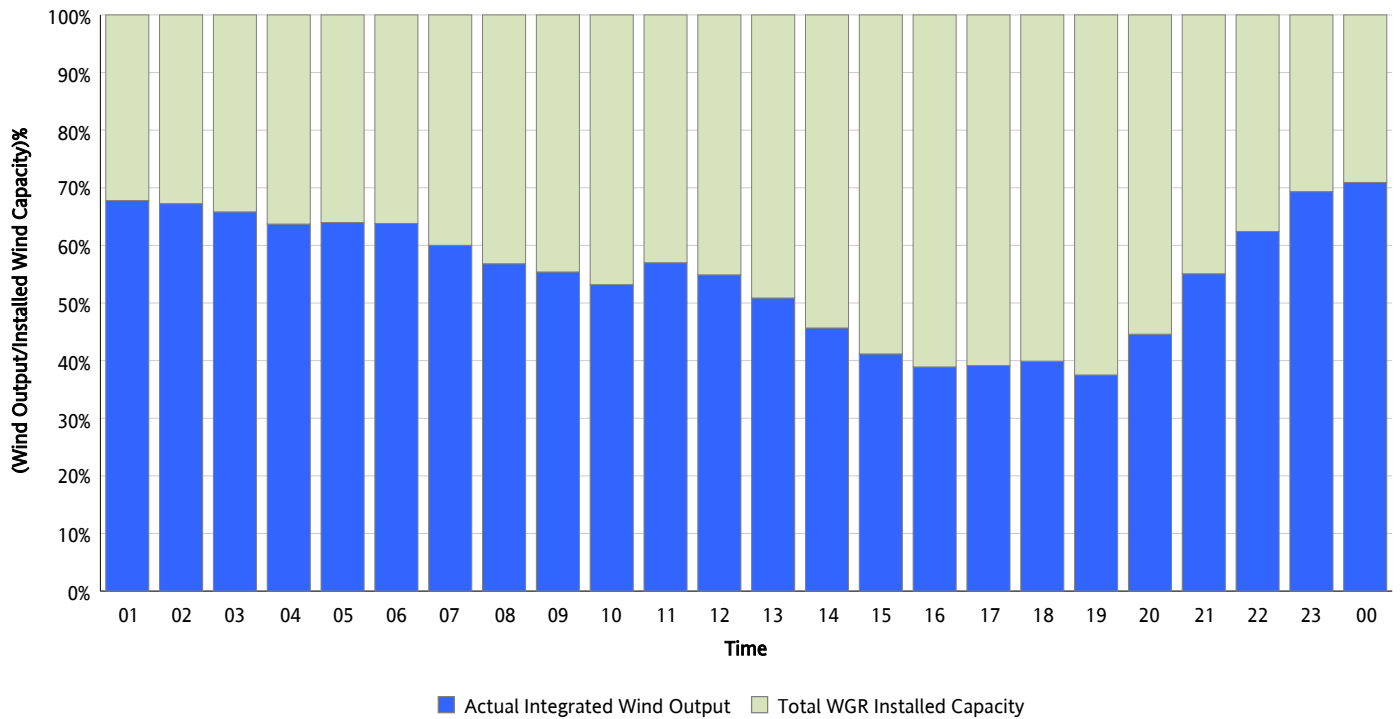
**Hourly Average Actual Load vs. Actual Wind Output**  
10/21/2012



\* Wind Record and Wind Max represent instantaneous values and the rest of the values are integrated over the hour

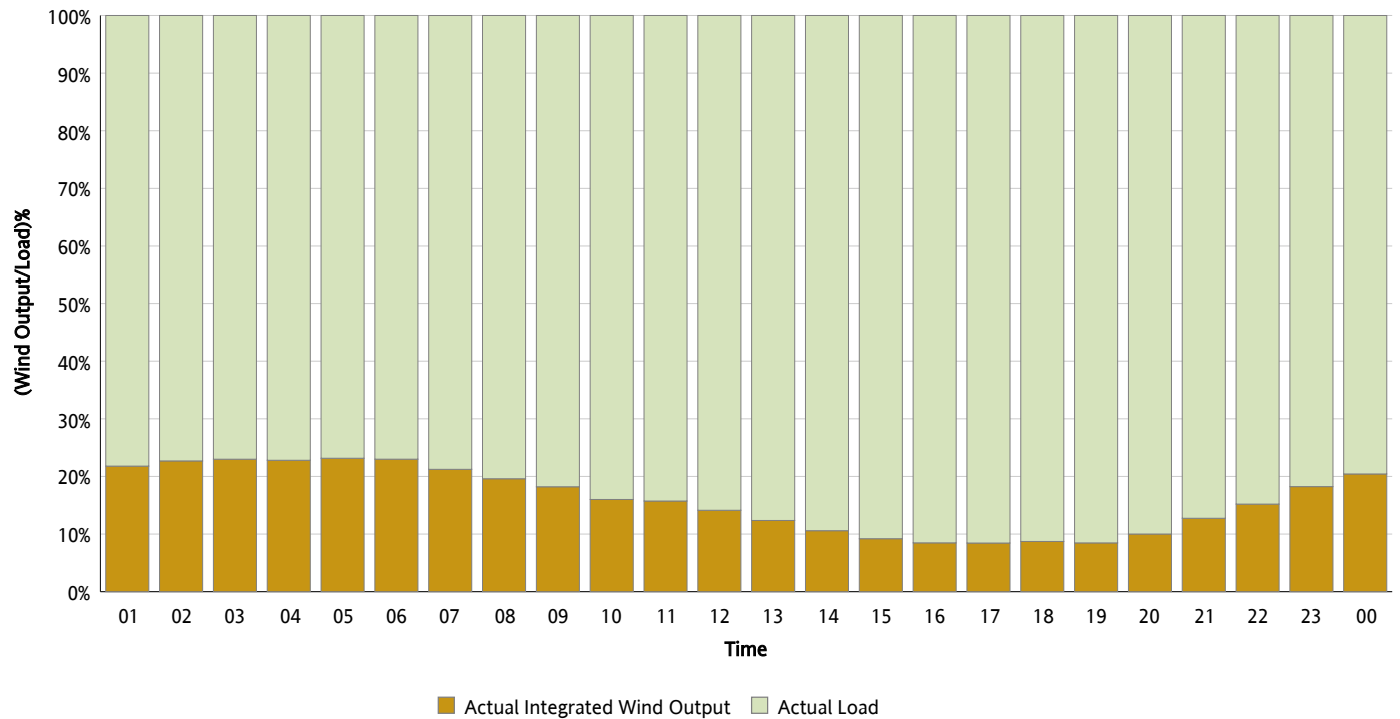
## Actual Wind Output as a Percentage of the Total Installed Wind Capacity

10/21/2012



## Actual Wind Output as a Percentage of the ERCOT Load

10/21/2012



## ERCOT Load vs. Actual Wind Output

10/14/2012 - 10/21/2012

